

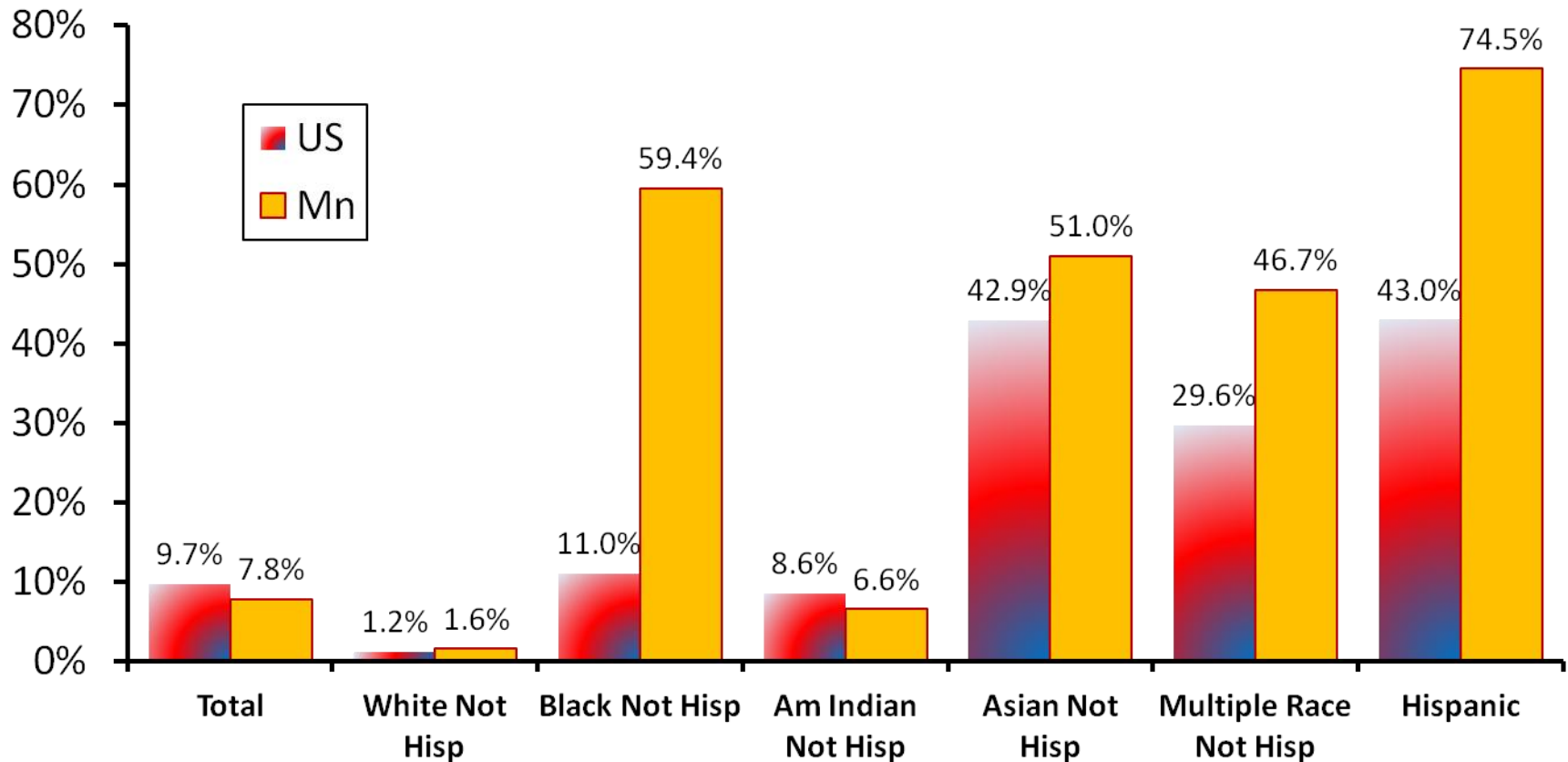
Diversity In Minnesota's School Age Population

Tom Gillaspay, State Demographer

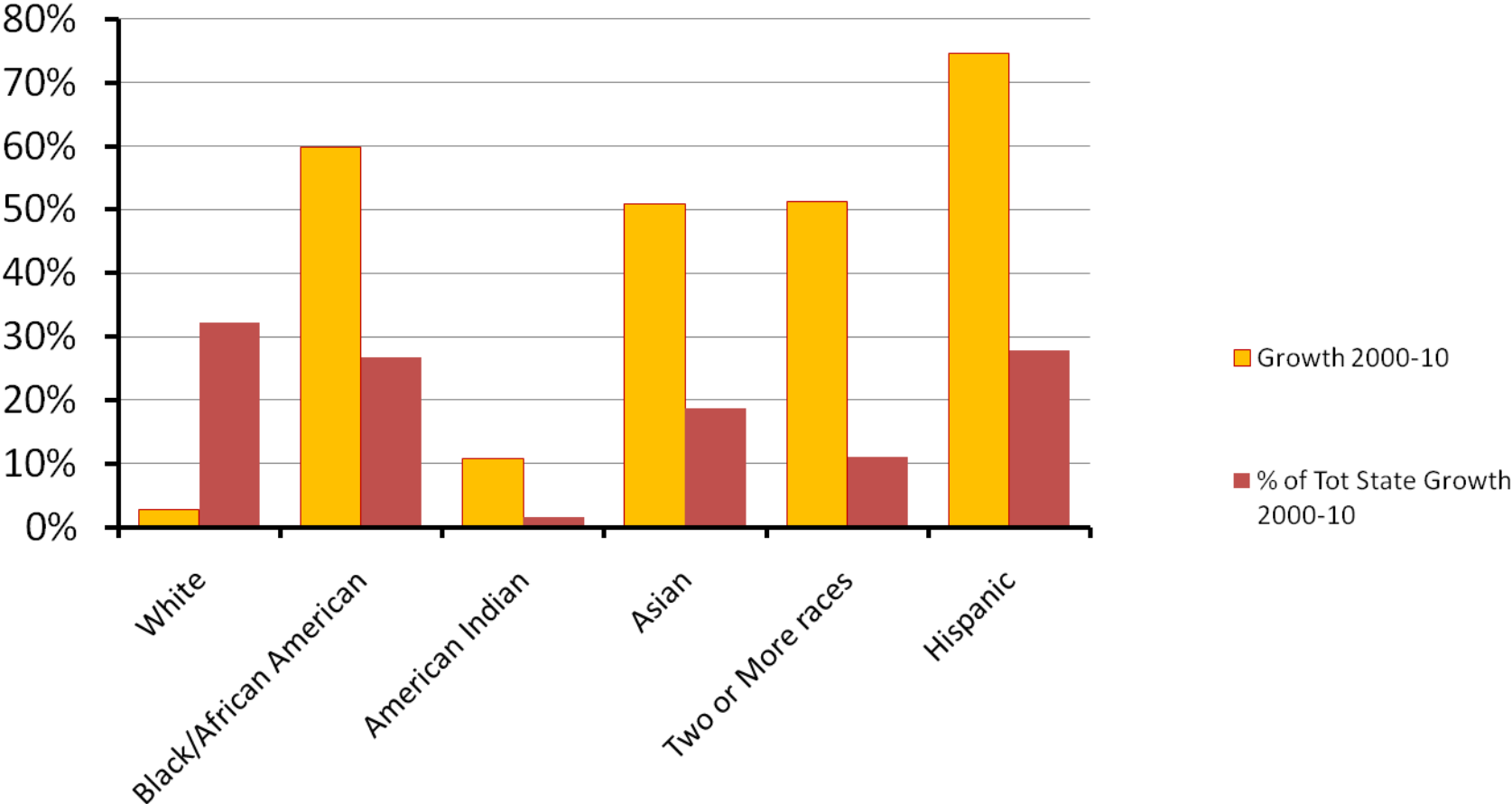
Mn Dept of Administration

November 2011

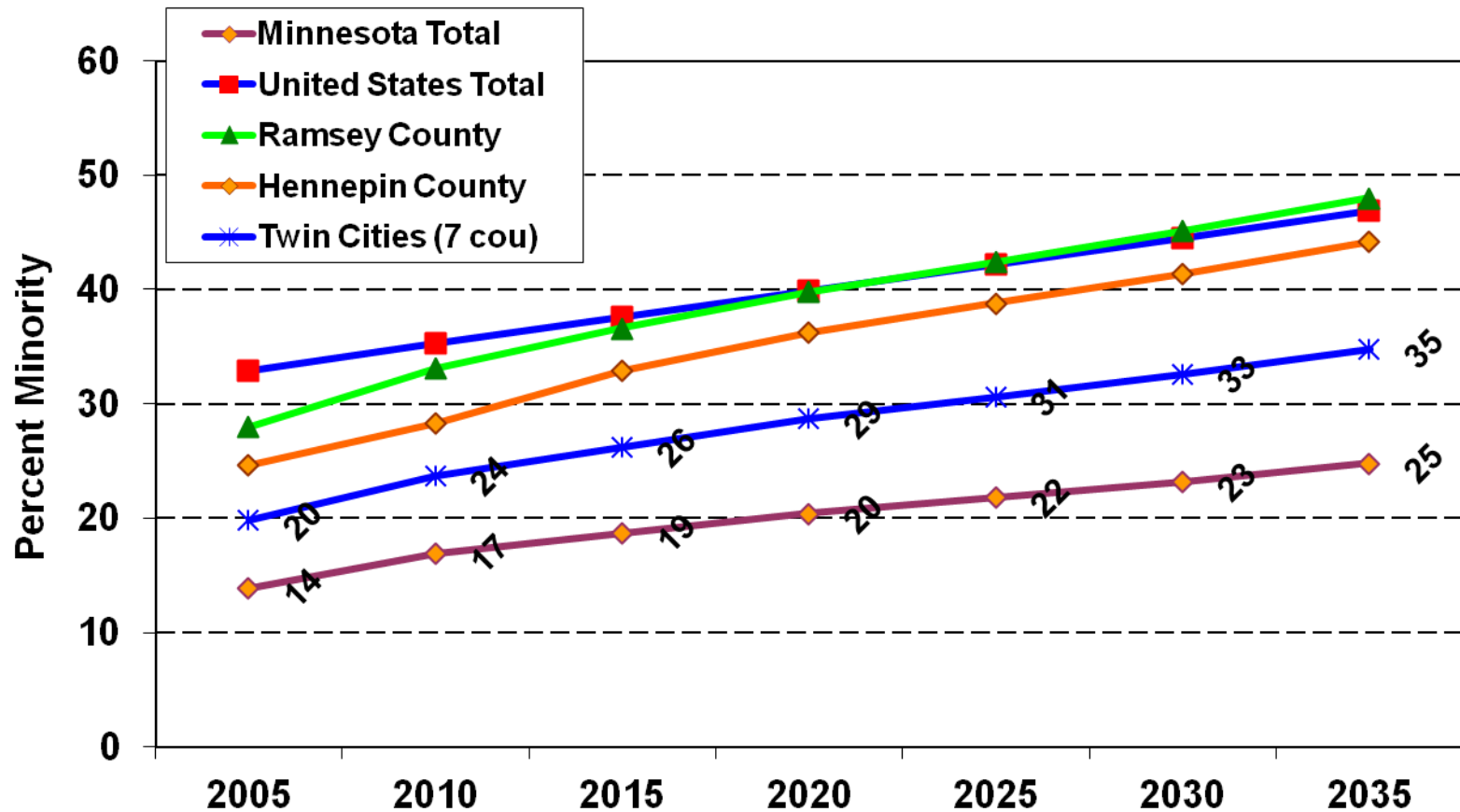
Nearly All Race/Ethnic Groups In Minnesota Increased Faster Than Nationally 2000-10



Minnesota—Growth & Percent of State Growth 2000-10

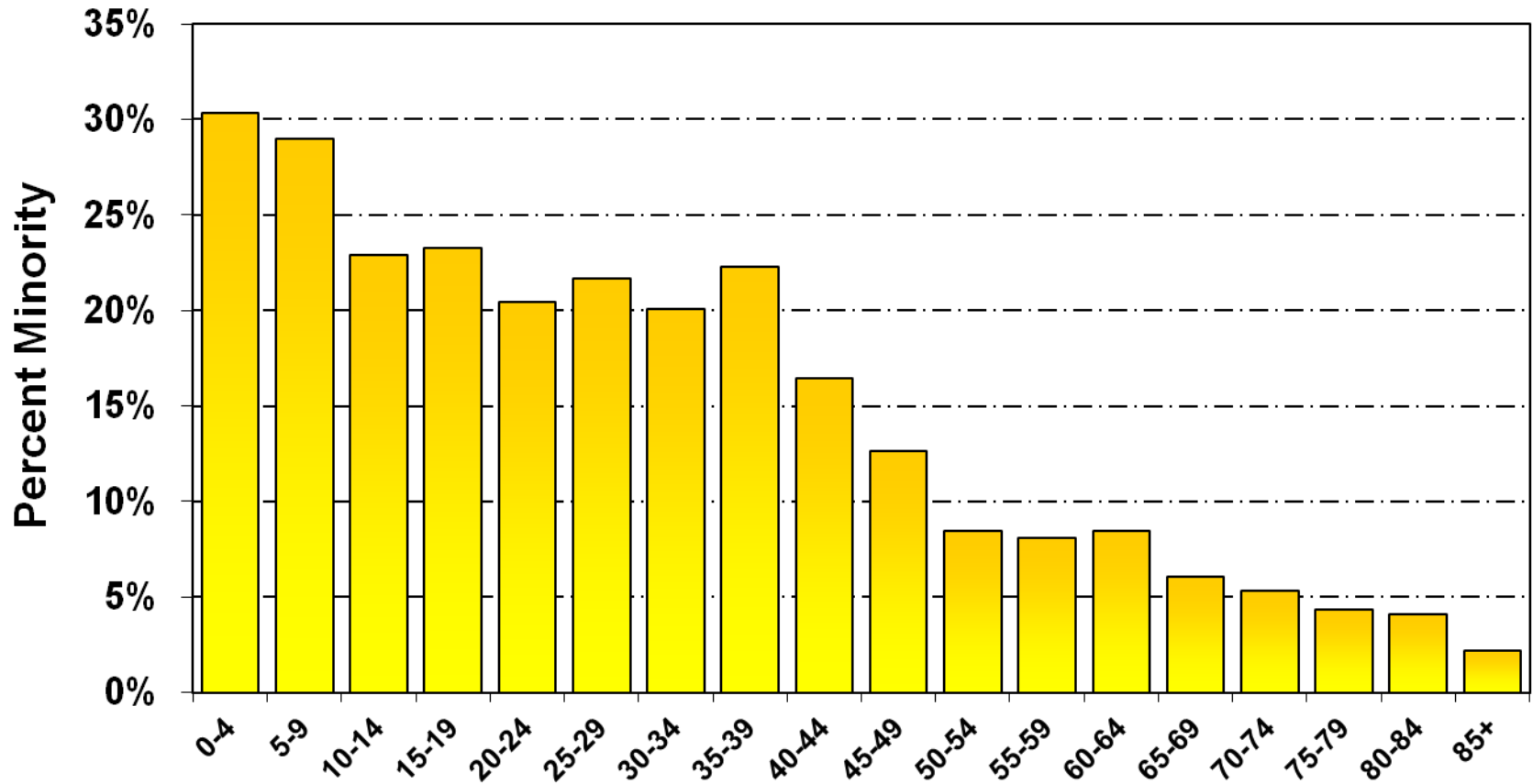


Minnesota Will Grow More Diverse; Remain Less Diverse Than The Nation



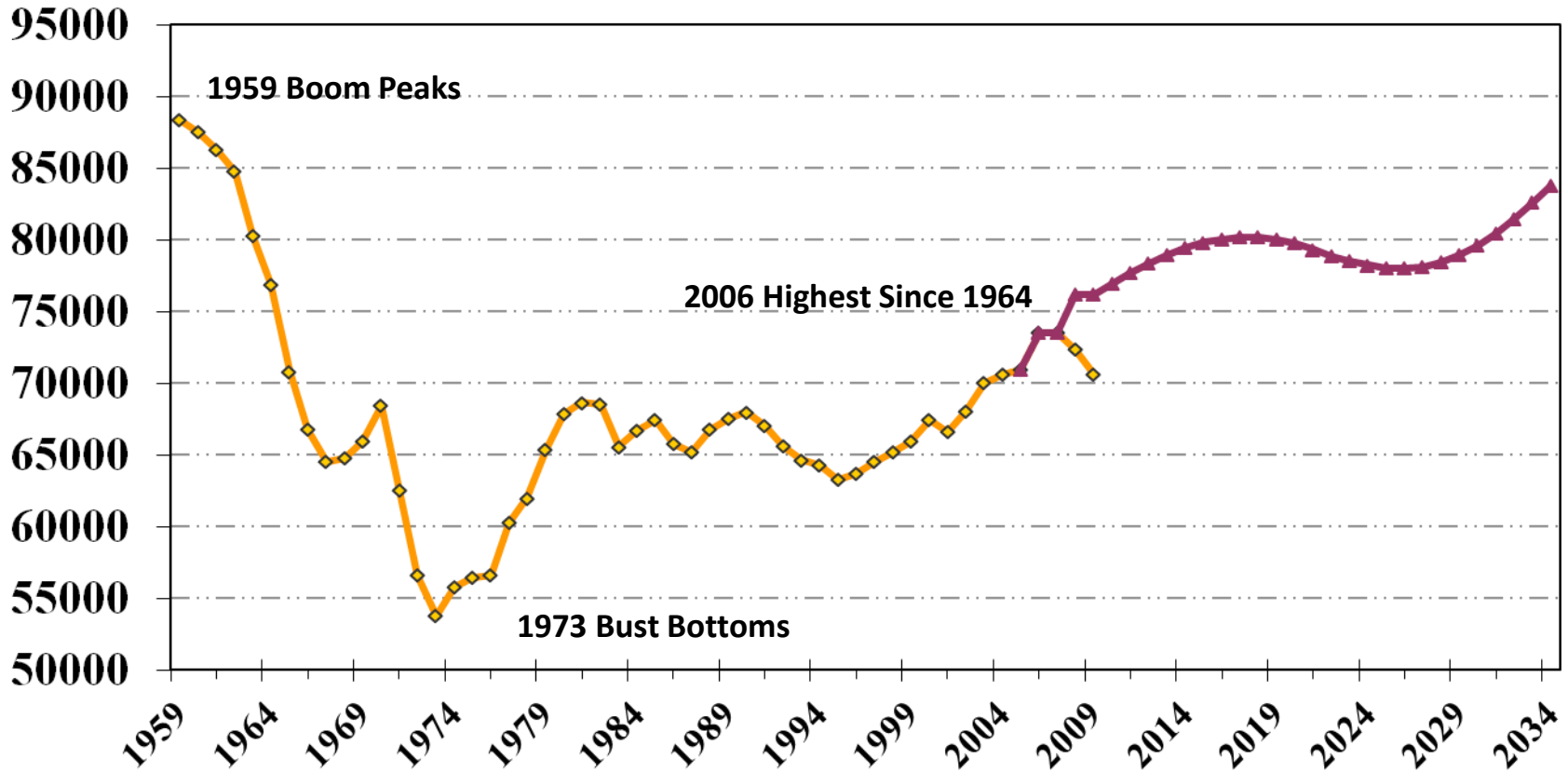
State Demographer & Census Bureau projections, revised to 2010 Census

Minnesota's Younger Population Is Much More Diverse Than The Older



2010 ACS

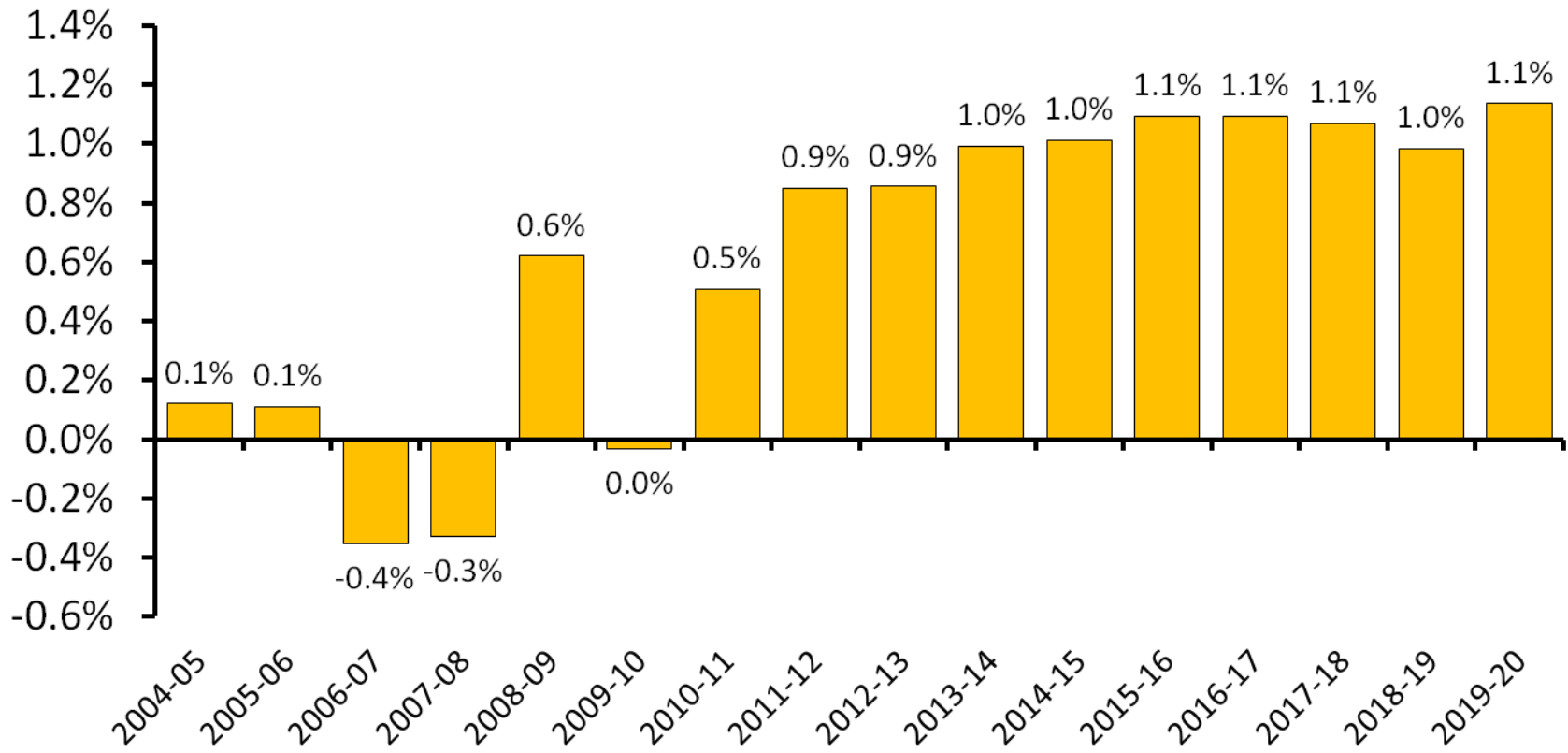
Minnesota Births 1959 to 2035



Source: Mn Dept of Health, revised Nov 2011

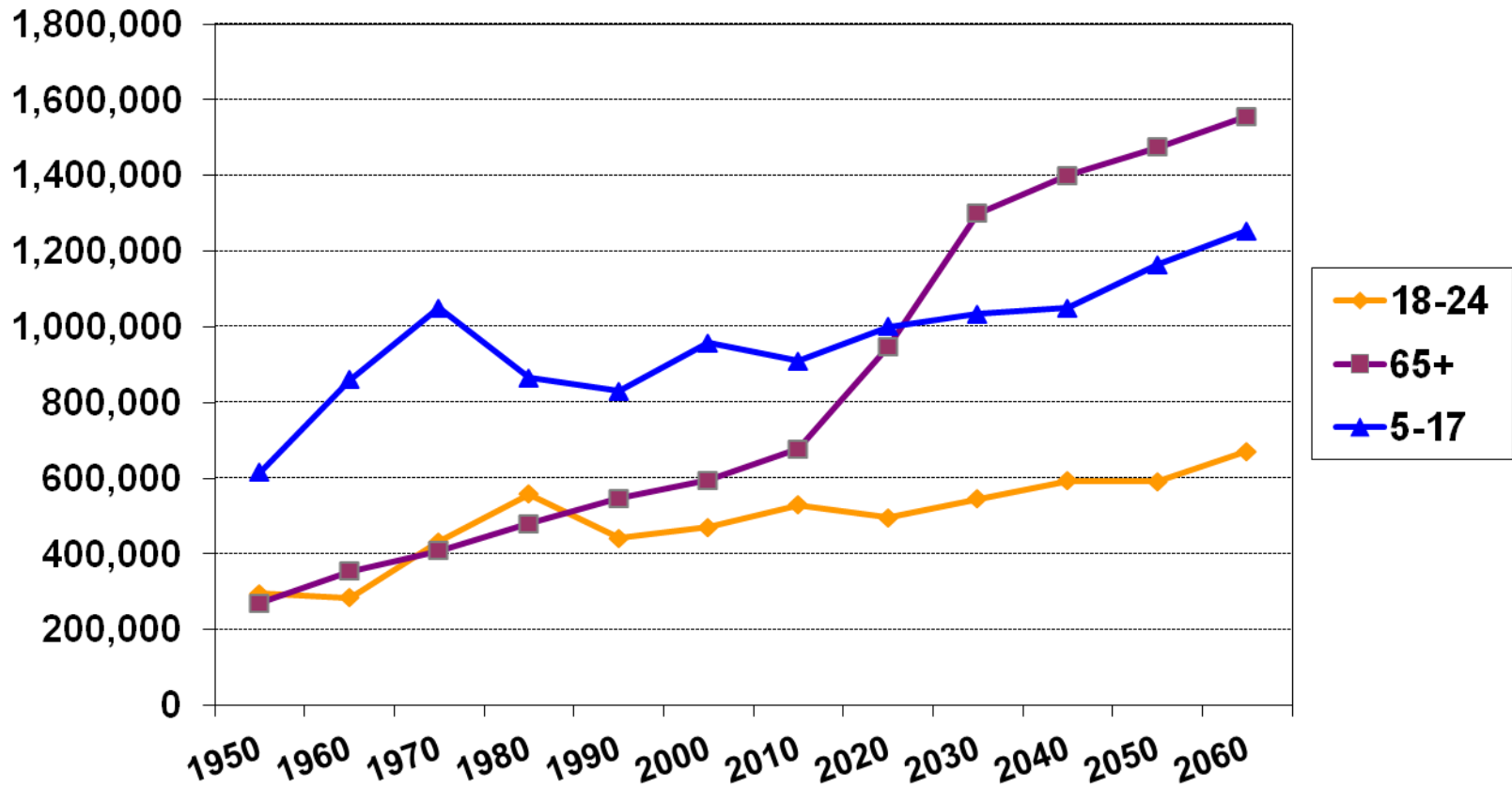
After a Decade of Little Change, Minnesota K-12 Enrollments Will Begin to Grow More Rapidly

School Year Starting Date



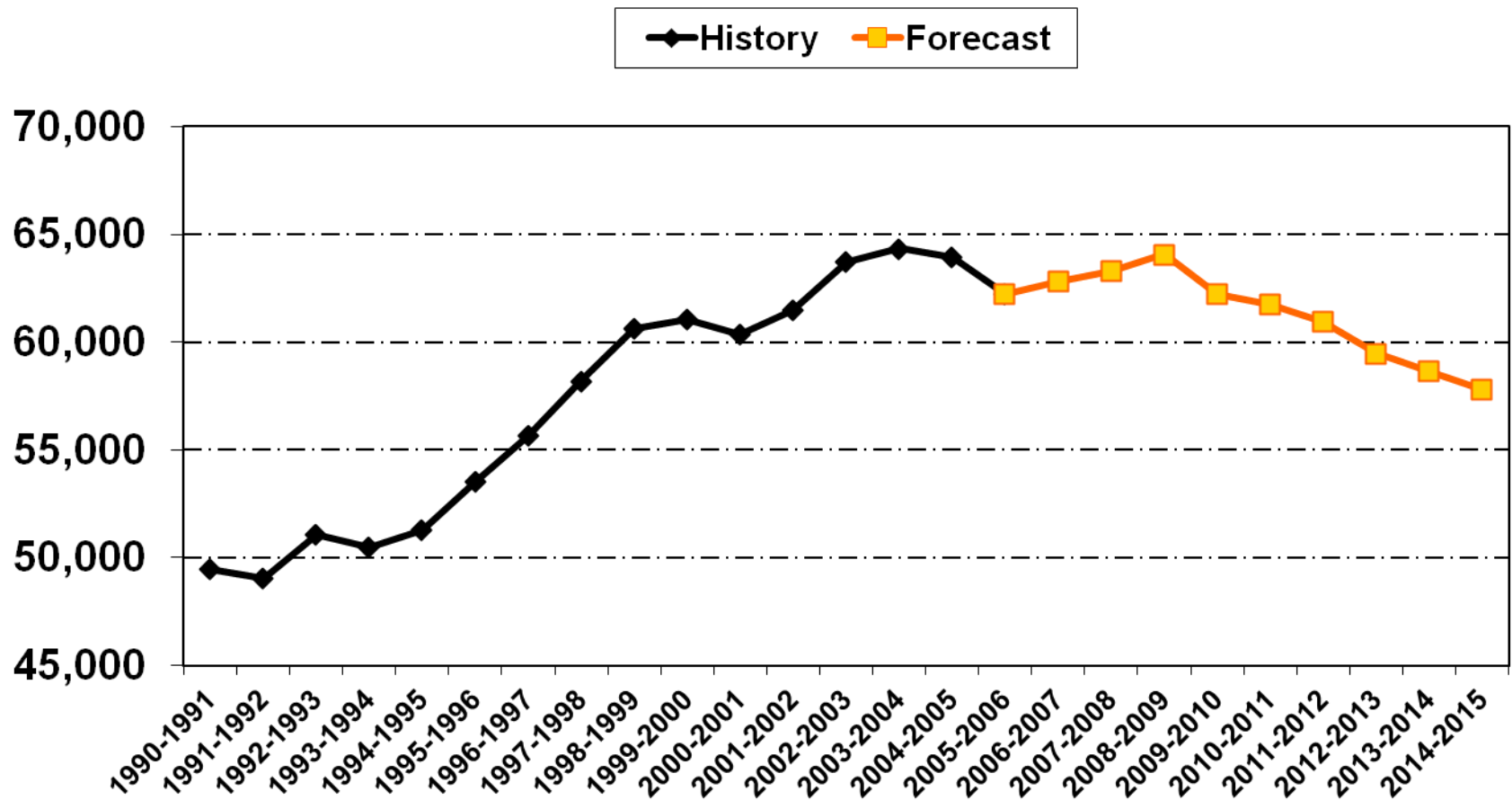
Source: Mn Dept of Education, Minnesota State Demographic Center projection

Budget Pressures Will Change More 65+ Than School Age by 2020



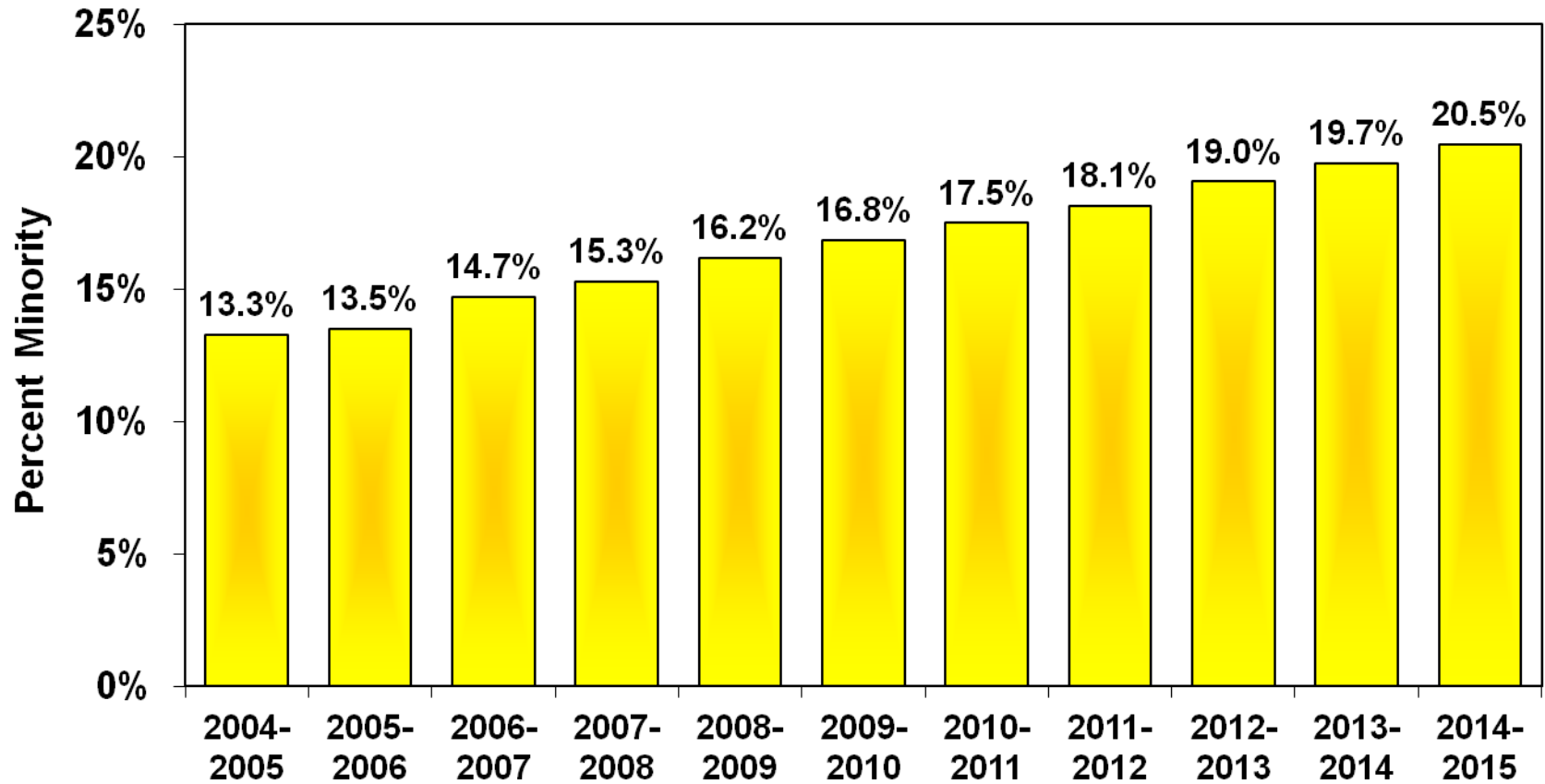
Census counts & State Demographer projection, revised 2010

Total Minnesota High School Graduates Will Peak In 2008-09



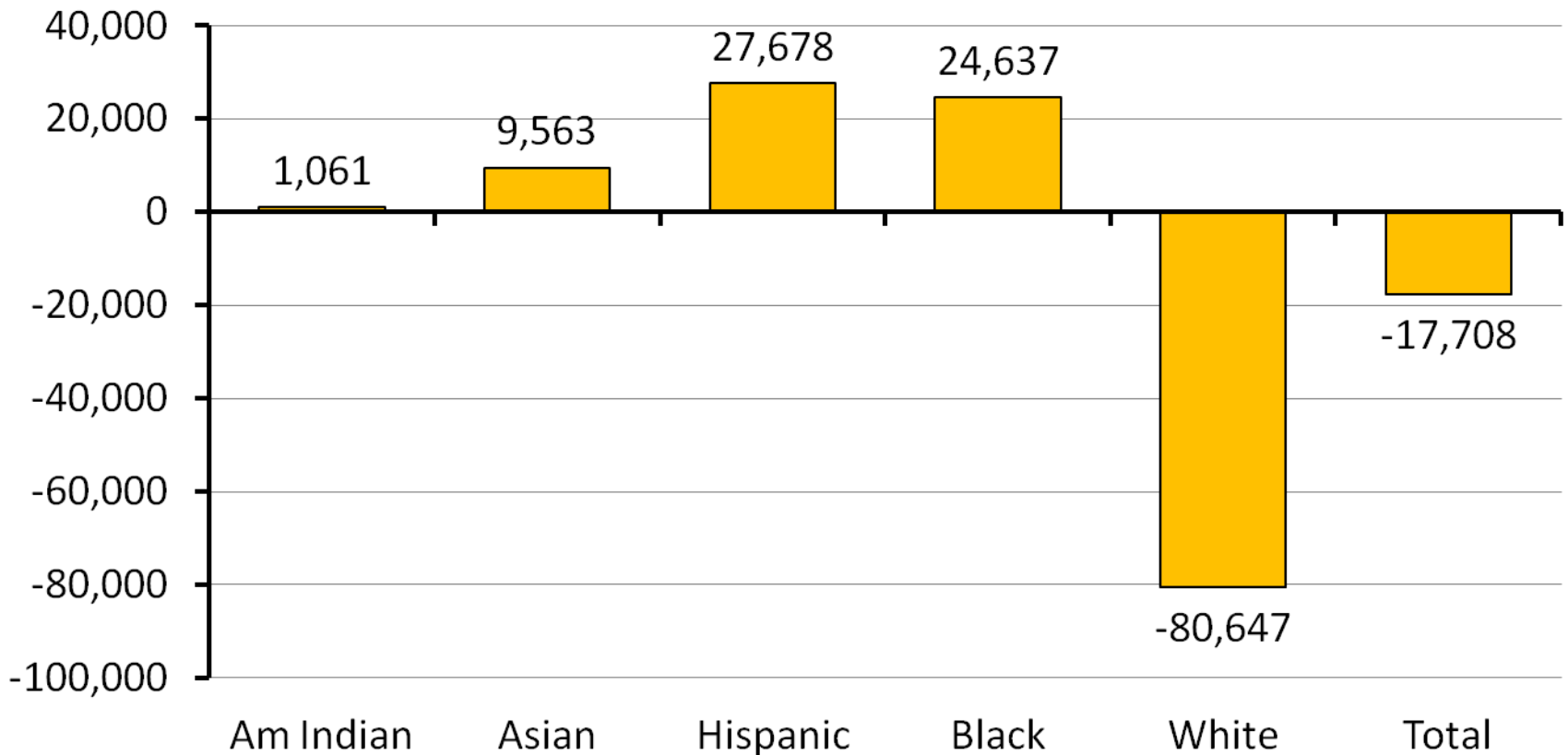
State Demographer projection

Minority Graduates Will Be An Increasing Share Of Minnesota High School Graduates

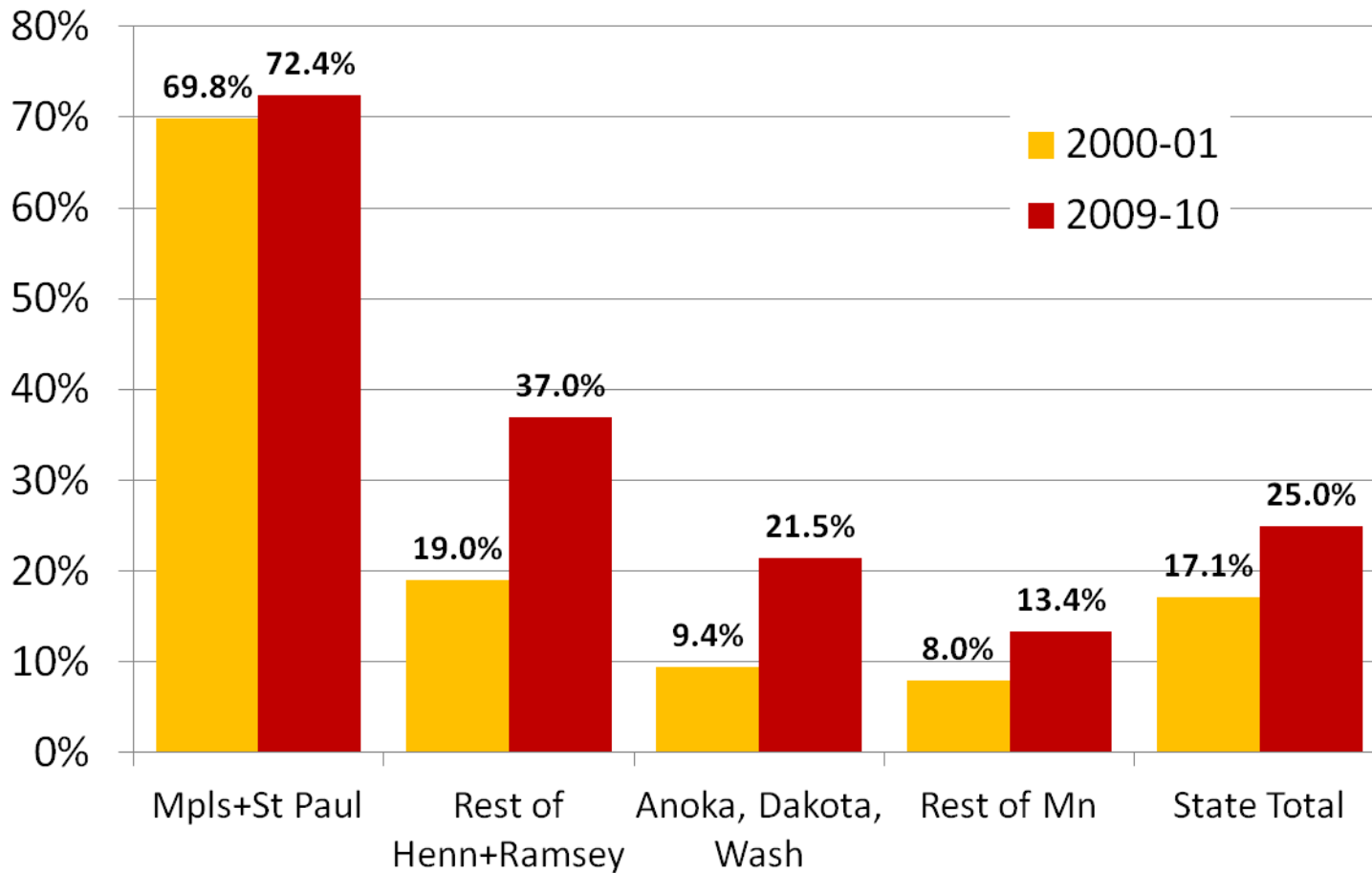


Change in Minnesota K-12 Enrollment 2000-01 to 2009-10

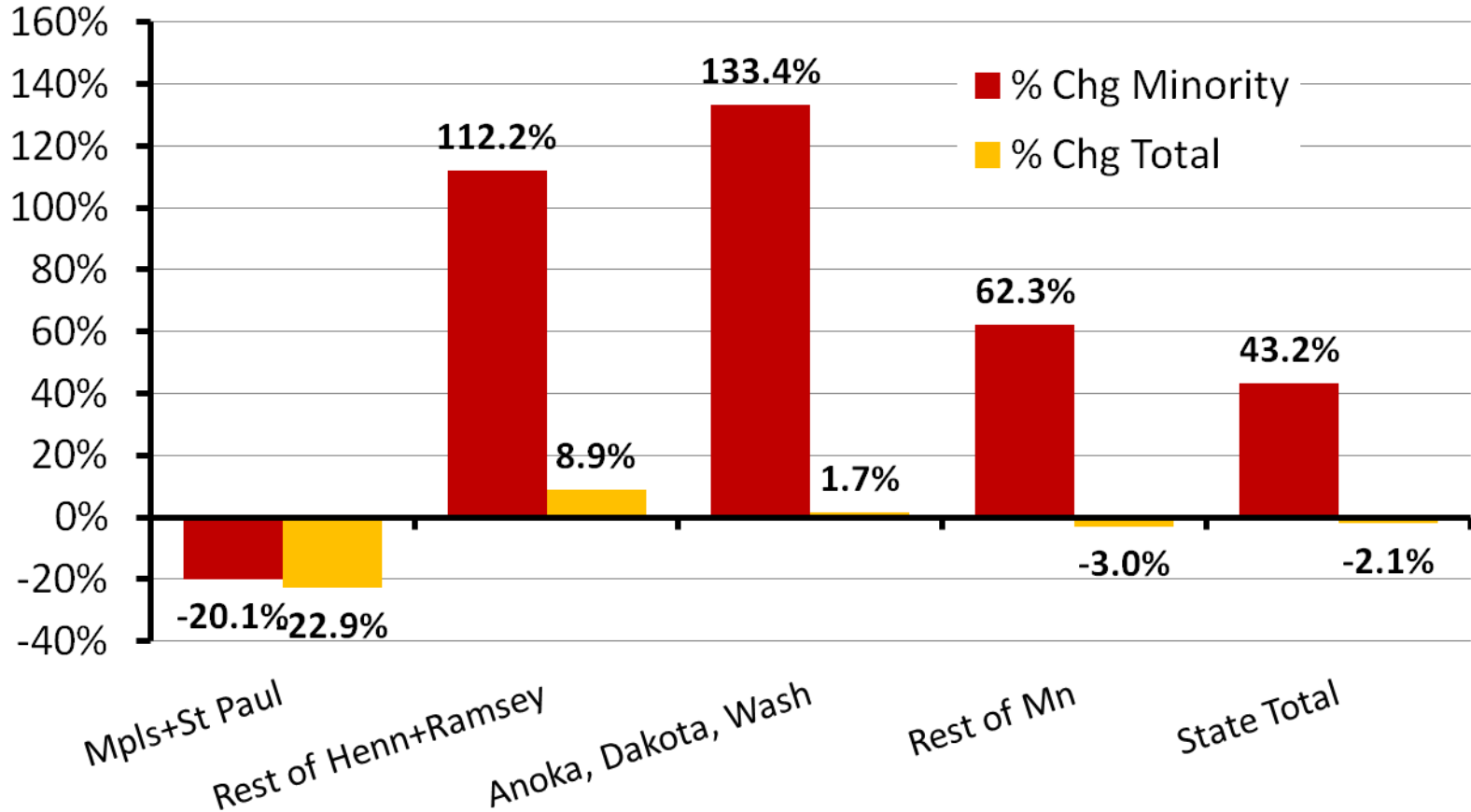
Numeric Change



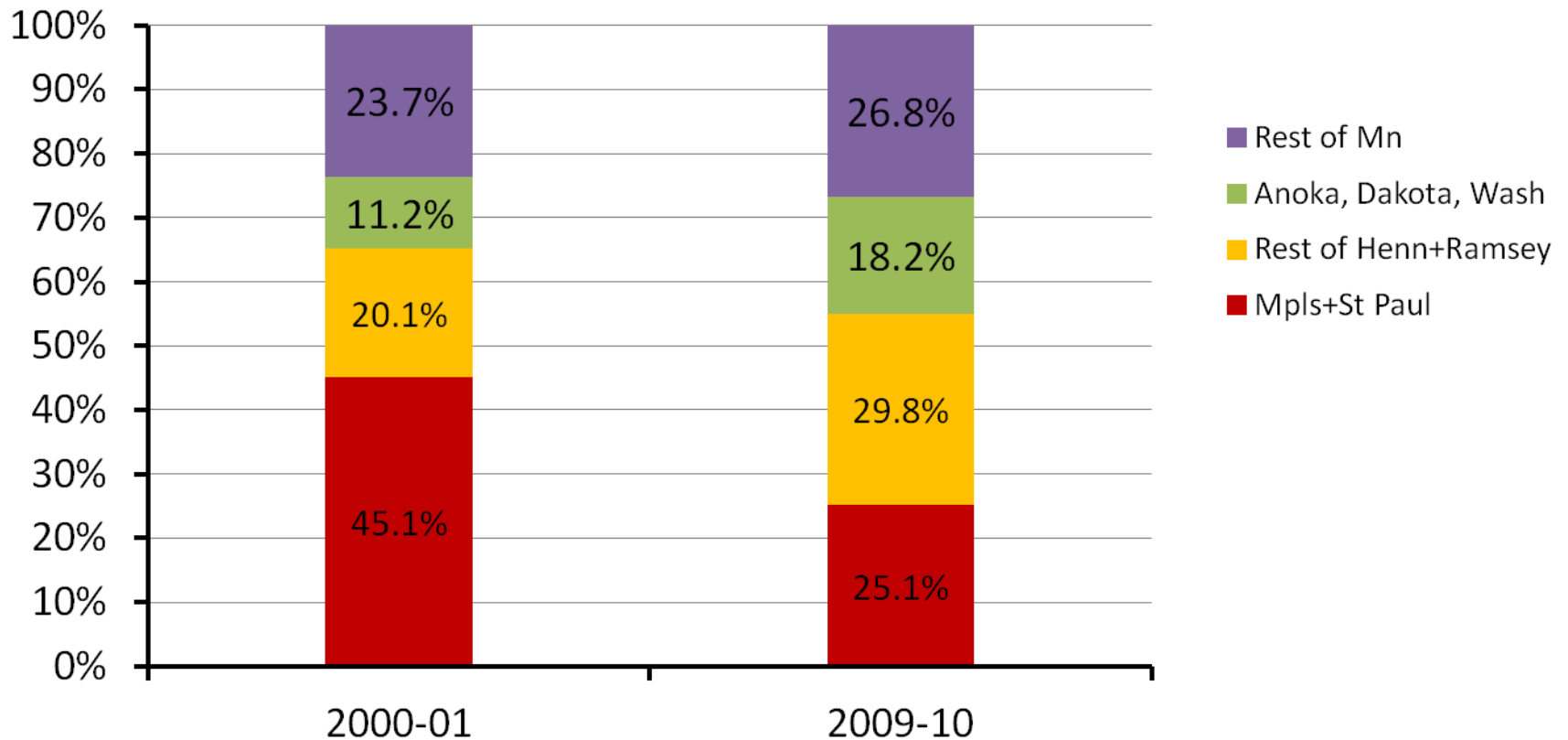
Percent Minority Enrollment In K-12 Education



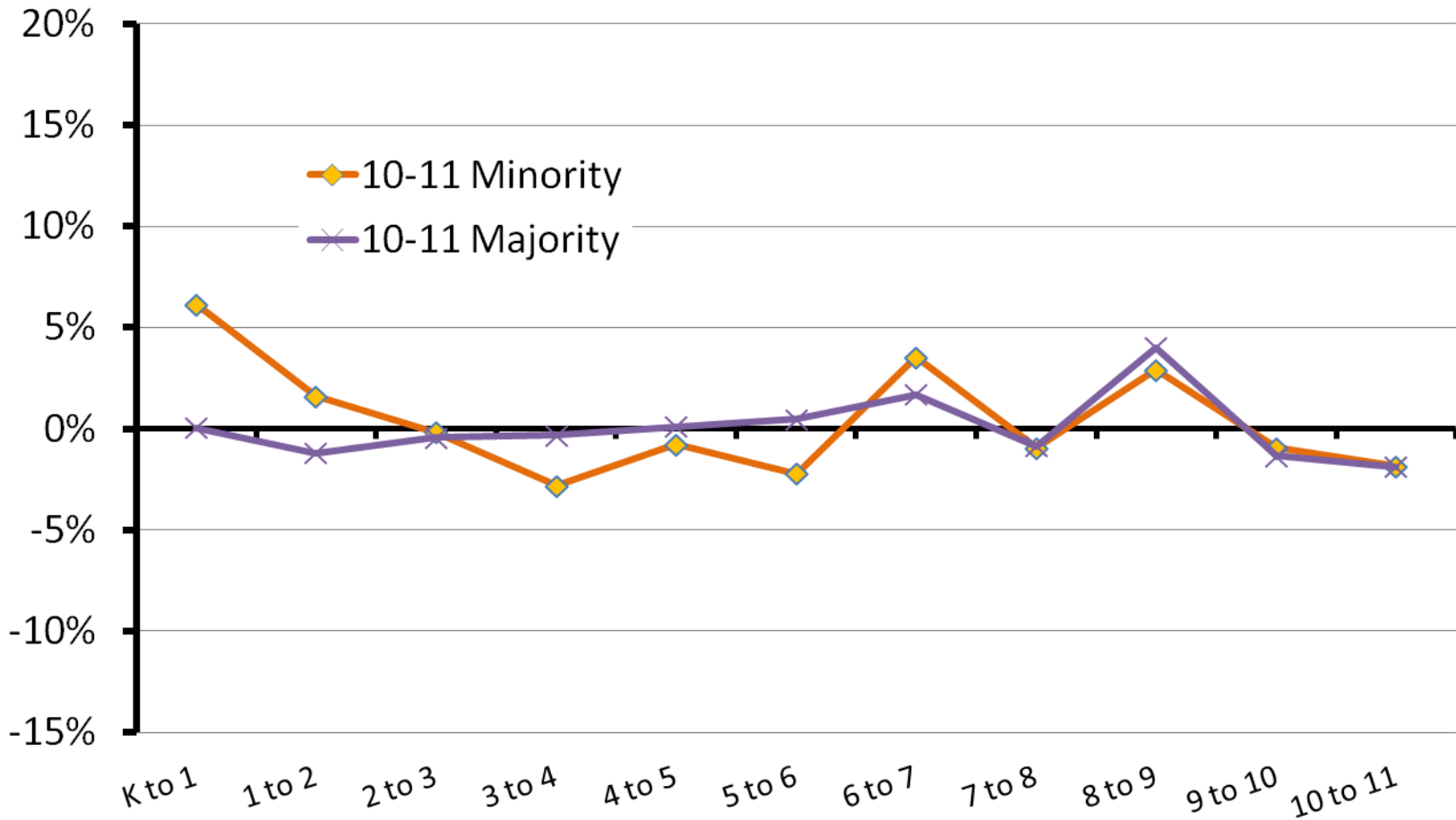
Change In K-12 Enrollments 2000-01 to 2009-10



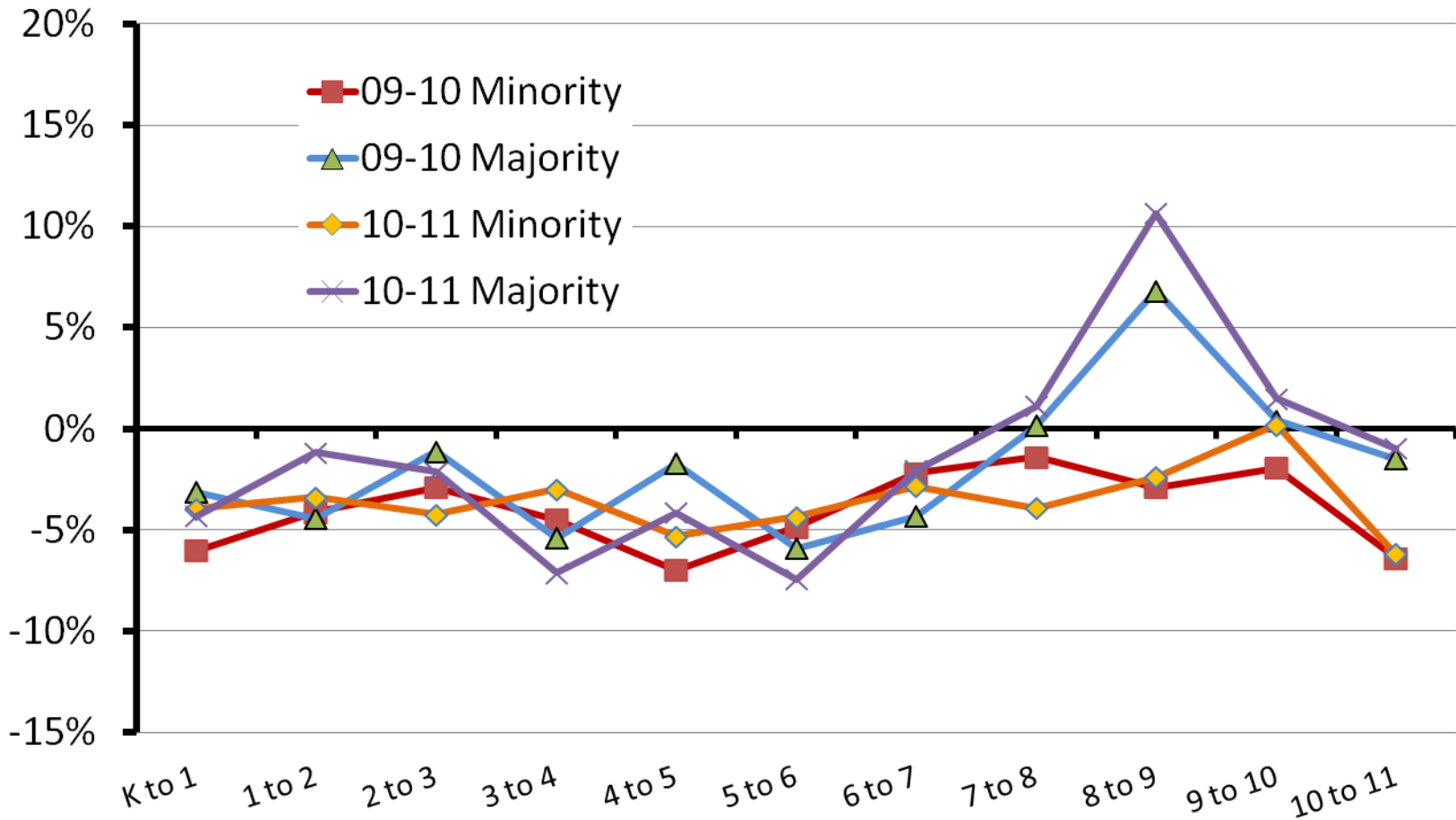
Percent Of Minnesota Minority Student Enrollment In The Area



Grade Progressions Anoka-Hennepin School District 2008-09 to 2009-10 and 2009-10 to 2010-11



Grade Progressions Minneapolis School District 2008-09 to 2009-10 and 2009-10 to 2010-11



Grade Progressions St Paul School District 2008-09 to 2009-10 and 2009-10 to 2010-11

